

can-am®



ATV & SSV Lineup

2024

THE CAN-AM LINEUP 2024



INNOVATION AND PERFORMANCE:

This year's Can-Am line-up showcases cutting-edge technology, superior handling, and impressive power. Each model is designed for optimal performance, ensuring a thrilling ride every time.

COMFORT AND VERSATILITY:

With a focus on rider comfort and versatility, the 2024 line-up offers adjustable ergonomics, spacious interiors, and multi-mode adaptability, catering to a variety of terrains and riding styles.

SAFETY AND SUSTAINABILITY:

Prioritizing safety and sustainability, the 2024 range features advanced safety systems and eco-friendly designs. Our vehicles not only protect riders but also minimize environmental impact.



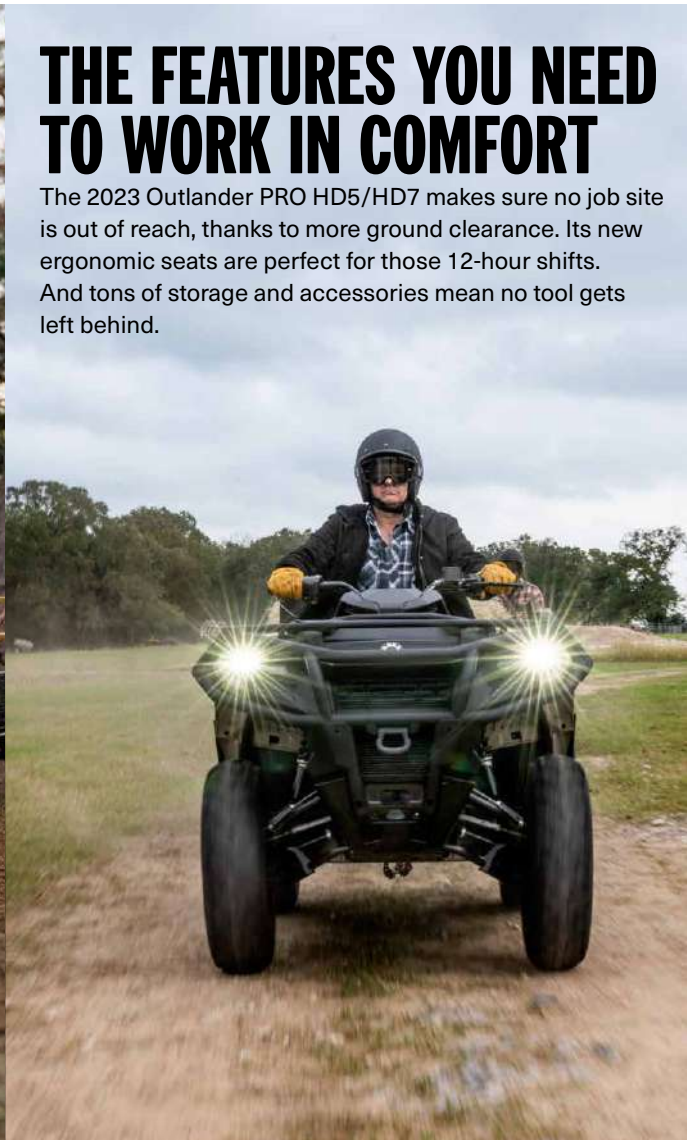


COMPROMISE NOTHING WITH THE 2023 OUTLANDER PRO

The new Outlander PRO HD5/HD7 offers more class-leading features than any other ATV, including horsepower, torque, towing capacity, and storage. Throw in a utility-calibrated suspension, more protection, and 3,000-mile maintenance intervals, and the Outlander PRO just offers more value for your money.

THE FEATURES YOU NEED TO WORK IN COMFORT

The 2023 Outlander PRO HD5/HD7 makes sure no job site is out of reach, thanks to more ground clearance. Its new ergonomic seats are perfect for those 12-hour shifts. And tons of storage and accessories mean no tool gets left behind.



REFUSES TO QUIT

The new Outlander PRO was built to stick to the job. Rotax engines give it the horsepower to work harder. The new pDrive clutch offers better performance and lower maintenance than any competitor. And the all-new alloy chassis is the stuff of rally champions, made from similar material as the Maverick.





The Outlander PRO HD5/HD7 might go down as your best-ever co-worker. Its Rotax engines are field proven, plus it has best-in-class towing capacity and a utility-calibrated suspension for better handling when hauling heavy loads. Utility bumpers, 6-ply tires and a speed limiter also allow you to work safer.

THE ALL-NEW OUTLANDER PRO



CLASS LEADING:

- POWER - UP TO 50HP
- GROUND CLEARANCE - UP TO 33CM
- TOWING CAPACITY - UP TO 830KG
- SUSPENSION TRAVEL - UP TO 26CM



THE ALL-NEW OUTLANDER 500/700



READY FOR ANYTHING

The new Outlander 500/700 gives you a better built, better performing, more durable ATV than any to ever come before. It's the new leader in Off-Road Livin'.

THE KING OF COMFORT

The Features You Need to Ride in Style

The Outlander 500/700 features new ergonomic seats, so you can ride in comfort for as long as you want. And because they have more ground clearance, no obstacle is off limits. Plus, tons of accessories and storage allow you to bring whatever you need on the adventure.



MAKE IT A HAND-ME-DOWN

Built to Give You Years of Service, Hassle-Free

The Outlander 500/700 was made for the long haul. It comes with a battle-hardened 500/700 Rotax engine. The new pDrive clutch ups the engine performance and requires less maintenance. And the new chassis is built with tubular architecture and a similar alloy as the rally-proven Maverick.



OUTLANDER FAMILY

CONQUER THE COUNTRYSIDE



OUTLANDER PRO HD5 ●

- 40 hp (30 kW)
- 26-in. 6-ply tires
- Increased ground clearance (13 in. / 33 cm)
- Premium Front Bumper, Rear Bumper and Full Skid plate



OUTLANDER PRO HD5 T ●

EC homologated T category
Up to 60 km/h

- 40 hp (30 kW)
- 26-in. 6-ply tires
- Increased ground clearance (13 in. / 33 cm)
- Premium Front Bumper, Rear Bumper and Full Skid plate



OUTLANDER PRO XU HD5 ●

- 40 hp (30 kW)
- 26-in. XPS Trail King 6-ply tires
- Tri-Mode Dynamic Power Steering (DPS™)
- Increased ground clearance (13 in. / 33 cm)
- Premium Front Bumper, Rear Bumper and Full Skid plate



OUTLANDER PRO XU HD5 T ●

EC homologated T category
Up to 60 km/h

- 40 hp (30 kW)
- 26-in. XPS Trail King 6-ply tires
- Tri-Mode Dynamic Power Steering (DPS™)
- Increased ground clearance (13 in. / 33 cm)
- Premium Front Bumper, Rear Bumper and Full Skid plate



OUTLANDER PRO XU HD7 ●

- 50 hp (37 kW)
- 26-in. XPS Trail King 6-ply tires
- Tri-Mode Dynamic Power Steering (DPS™)
- Increased ground clearance (13 in. / 33 cm)
- Premium Front Bumper, Rear Bumper and Full Skid plate



OUTLANDER PRO XU HD7 T ●

EC homologated T category
Up to 60 km/h
Also available with more than 60km/h version

- 50 hp (37 kW)
- 26-in. XPS Trail King 6-ply tires

- Tri-Mode Dynamic Power Steering (DPS™)
- Increased ground clearance (13 in. / 33 cm)
- Premium Front Bumper, Rear Bumper and Full Skid plate



OUTLANDER DPS 500 T ●

EC homologated T category
More than 60 km/h

- 40 hp (30kW)
- Tri-Mode Dynamic Power Steering (DPS)
- Full Skid plate
- 12 in. cast aluminium wheels



OUTLANDER MAX DPS 500 ●

- 40 hp (30kW)
- Tri-Mode Dynamic Power Steering (DPS)
- Full Skid plate
- 12 in. cast aluminium wheels



OUTLANDER MAX DPS 500 T ●

EC homologated T category
More than 60 km/h

- 40 hp (30kW)
- Tri-Mode Dynamic Power Steering (DPS)
- Full Skid plate
- 12 in. cast aluminium wheels



OUTLANDER DPS 700 ●

- 50hp (37 kW)
- Tri-Mode Dynamic Power Steering (DPS™)
- Reinforced seat skin
- Increased ground clearance (12 in. / 30.5 cm)



OUTLANDER DPS 700 T ●

EC homologated T category
More than 60 km/h

- 50hp (37 kW)
- Tri-Mode Dynamic Power Steering (DPS)
- Full Skid plate
- 12 in. cast aluminium wheels



OUTLANDER MAX XT 700 ●

- 50hp (37 kW)
- Tri-Mode Dynamic Power Steering (DPS)
- Full Skid plate
- Front and Rear Bumper
- 14 in. cast aluminium wheels



OUTLANDER MAX XT 700 T ●

EC homologated T category
More than 60 km/h

- 50hp (37 kW)
- Tri-Mode Dynamic Power Steering (DPS)
- Full Skid plate
- Front and Rear Bumper
- 14 in. cast aluminium wheels



OUTLANDER MAX PRO XU HD7 T ●

EC homologated T category
Up to 60 km/h

- 50hp (37 kW)
- Tri-Mode Dynamic Power Steering (DPS)
- Full Skid plate
- Front and Rear Bumper



OUTLANDER MAX DPS 700 ●

- 50hp (37 kW)
- Tri-Mode Dynamic Power Steering (DPS)
- Full Skid plate
- 12 in. cast aluminium wheels



OUTLANDER MAX DPS 700 T ●

EC homologated T category
More than 60 km/h

- 50hp (37 kW)
- Tri-Mode Dynamic Power Steering (DPS)
- Full Skid plate
- 12 in. cast aluminium wheels



OUTLANDER MAX XT-P 650 / 1000 T ●●

EC homologated T category
More than 60 km/h

650 T: 59 hp (44 kW)
1000 T: 80 hp (60 kW)

- 26-in. ITP† Terracross radial tires
- Tri-Mode Dynamic Power Steering (DPS™)
- FOX† 1.5 PODIUM QS3† shocks
- 1,588 kg winch



OUTLANDER DPS 1000 T ABS ●

EC homologated T category
More than 60 km/h

- 80 hp (60 kW)
- 26 in. ITP† Terracross tires, 14 in. cast-aluminum wheels

- Tri-Mode Dynamic Power Steering (DPS™)
- Heavy-duty front bumper
- Mudguards
- Anti-Lock Braking System (ABS)



OUTLANDER DPS 1000R ●

- 91 hp (68 kW)
- 26 in. ITP† Terracross tires, 14 in. cast-aluminum wheels
- Tri-Mode Dynamic Power Steering (DPS™)

- Heavy-duty front bumper
- Mudguards



OUTLANDER MAX DPS 1000R ●

- 91 hp (68 kW)
- Heavy-duty front bumper
- Tri-Mode Dynamic Power Steering (DPS™)

- Mudguards
- 26 in. ITP† Terracross tires, 14 in. cast-aluminum wheels



OUTLANDER MAX DPS 1000 T ●

EC homologated T category
More than 60 km/h

- 80 hp (60 kW)
- Heavy-duty front bumper
- Tri-Mode Dynamic Power Steering (DPS™)

- Mudguards
- 26 in. ITP† Terracross tires, 14 in. cast-aluminum wheels
- Anti-Lock Braking System (ABS)



OUTLANDER MAX XT-P 1000R ●●

- 91 hp (68 kW)
- 26-in. ITP† Terracross radial tires
- Tri-Mode Dynamic Power Steering (DPS™)
- FOX† 1.5 PODIUM QS3† shocks
- 1,588 kg winch
- Visco-4Lok



OUTLANDER MAX LIMITED 1000R ●

- 91 hp (68 kW)
- 27-in. Maxxis† Bighorn 2.0 tires
- Tri-Mode Dynamic Power Steering (DPS™)
- FOX† 1.5 PODIUM QS3† shocks
- 1,588 kg winch
- Visco-4Lok



OUTLANDER MAX XU+ 1000 T ●

**EC homologated T category
Up to 60 km/h**

- 80 hp (60kW)
- 1,588 kg winch
- Tri-Mode Dynamic Power Steering (DPS™)
- 26-in. Carlisle† ACT HD 6-ply tires
- Continuously Variable Transmission

- (CVT) with extra low L-gear
- 12-in. cast-aluminum wheels
- Heated hand grips & mudguards
- Visco-4Lok



OUTLANDER X XC 1000 T ●

**EC homologated T category
More than 60 km/h**

- 80 hp (60 kW)
- 26-in. ITP† Terracross radial tires
- Brake Traction Control with 4WD Lock
- FOX† 1.5 PODIUM RC2† shocks



OUTLANDER X XC 1000R ●

- 91 hp (68 kW)
- 26-in. ITP† Terracross radial tires
- Visco-4Lok
- FOX† 1.5 PODIUM RC2† shocks
- Aluminum front bumper with pre-runner and top brace



OUTLANDER X MR 700 ●

- 50hp (37 kW)
- 28 in. XPS Swamp King tires
- Tri-Mode Dynamic Power Steering (DPS)
- Visco-4Lok front differential



OUTLANDER X MR 1000R ●

- 91 hp (68 kW)
- Heavy-duty front & rear bumpers
- 1,588 kg winch
- 30 in. ITP Cryptid tires on 14 in. cast-aluminum wheels
- Visco-4Lok



OUTLANDER 6X6 XU+ 450/650/1000 T ● ●

EC homologated T category
Up to 60 km/h

450 T: 38 hp (28 kW)
650 T: 59 hp (44 kW)
1000 T: 80 hp (60 kW)

- Tri-Mode Dynamic Power Steering (DPS™)
- 1,588 kg winch
- Heated hand grips
- Heavy-duty front bumper
- Continuously Variable Transmission (CVT) with extra low L-gear



OUTLANDER MAX 6X6 XU+ 650 T/1000 ● ●

EC homologated T category
Up to 60 km/h

650 T: 59 hp (44 kW)
1000 T: 80 hp (60 kW)

- Tri-Mode Dynamic Power Steering (DPS™)
- 1,588 kg winch
- Heated hand grips
- Continuously Variable Transmission (CVT) with extra low L-gear

YOUTH AND RENEGADE FAMILY

FREEDOM TO EXPLORE



RENEGADE 110 EFI ●

- Fully automatic CVT
- Independent A-arm front suspension
- Electric start
- Built-in throttle limiter



RENEGADE X xc 110 EFI ●

- Fully automatic CVT
- Double A-arm front suspension with HPG Piggyback shocks
- Electric start
- Built-in throttle limiter
- Sport handguards
- X xc package graphics



DS 250 ●

- Fully automatic CVT
- Double A-arm front suspension
- Preload adjustable front and rear shocks
- Headlamps with tail light and brake light

TRAXTER FAMILY

UNSTOPPABLE UTILITY





RENEGADE 650 T ●

EC homologated T category
More than 60 km/h

- 59 hp (44 kW)
- 25 in. ITP Holeshoot† ATR tires
- Tri-Mode Dynamic Power Steering (DPS™)
- Front bumper
- 10.5 in. (26.7 cm) ground clearance



RENEGADE X XC 650/1000 T ●

EC homologated T category
More than 60 km/h

650 T: 59 hp (44 kW)
1000 T: 80 hp (60 kW)

- FOX† 1.5 PODIUM RC2† shocks
- 25-in. ITP Holeshoot† ATR tires
- Tri-Mode Dynamic Power Steering (DPS)
- 10.5 in. (26.7 cm) ground clearance



RENEGADE X XC 1000R ●

- 91 hp (68 kW)
- FOX† 1.5 PODIUM RC2† shocks
- 25 in. ITP Holeshoot† ATR tires
- Front bumper
- 10.5 in. (26.7 cm) ground clearance



RENEGADE X MR 1000R ●

- 91 hp (68 kW)
- FOX† 1.5 PODIUM QS3† shocks
- 30 in. ITP Cryptid† tires
- 1,588 kg winch
- Available Visco-4Lok, 12.5 in. (31.8 cm) ground clearance



TRAXTER HD7/HD9 T ●

EC homologated T category
Up to 60 km/h

HD7 T: 52 hp (39 kW)
HD9 T: 65 hp (48 kW)

- 11 in. (28 cm) ground clearance
- 27-in. Maxxis† Coronado tires
- VERSA-PRO bench seat
- 7.6" digital display



TRAXTER XU HD7/HD9/HD10 T ● ● ●

EC homologated T category

HD7 T: 52 hp (39 kW)
Up to 60 km/h
HD9 T: 65 hp (48 kW)
More than 60 km/h
HD10 T: 82 hp (61 kW)
More than 60 km/h

- 27-in. Maxxis† Coronado tires
- 2,041 kg winch
- Dynamic Power Steering (DPS)
- HD7: 11 in. (28 cm) ground clearance
- HD9/HD10: 13 in. (33 cm) ground clearance
- HD9 & HD10: Anti-lock Braking System (ABS)



TRAXTER PRO XU HD-10 T ● ●

EC homologated T category
More than 60 km/h

- 82 hp (61 kW)
- 12.5 in. (32 cm) ground clearance
- 27 in. Maxxis[®] Coronado tires
- 1,136 kg towing capacity

- Dynamic Power Steering (DPS)
- Anti-lock Braking System (ABS)
- 4,500-lb (2,041 kg) winch



TRAXTER MAX XU HD-10 T ●

EC homologated T category
More than 60 km/h

- 82 hp (61 kW)
- 12.5 in. (31.8 cm) ground clearance
- 27-in. Maxxis[®] Coronado tires

- VERSA-PRO bench seat with reinforced seat skin
- Dynamic Power Steering (DPS)
- Anti-lock Braking System (ABS)
- 4,500-lb (2,041 kg) winch



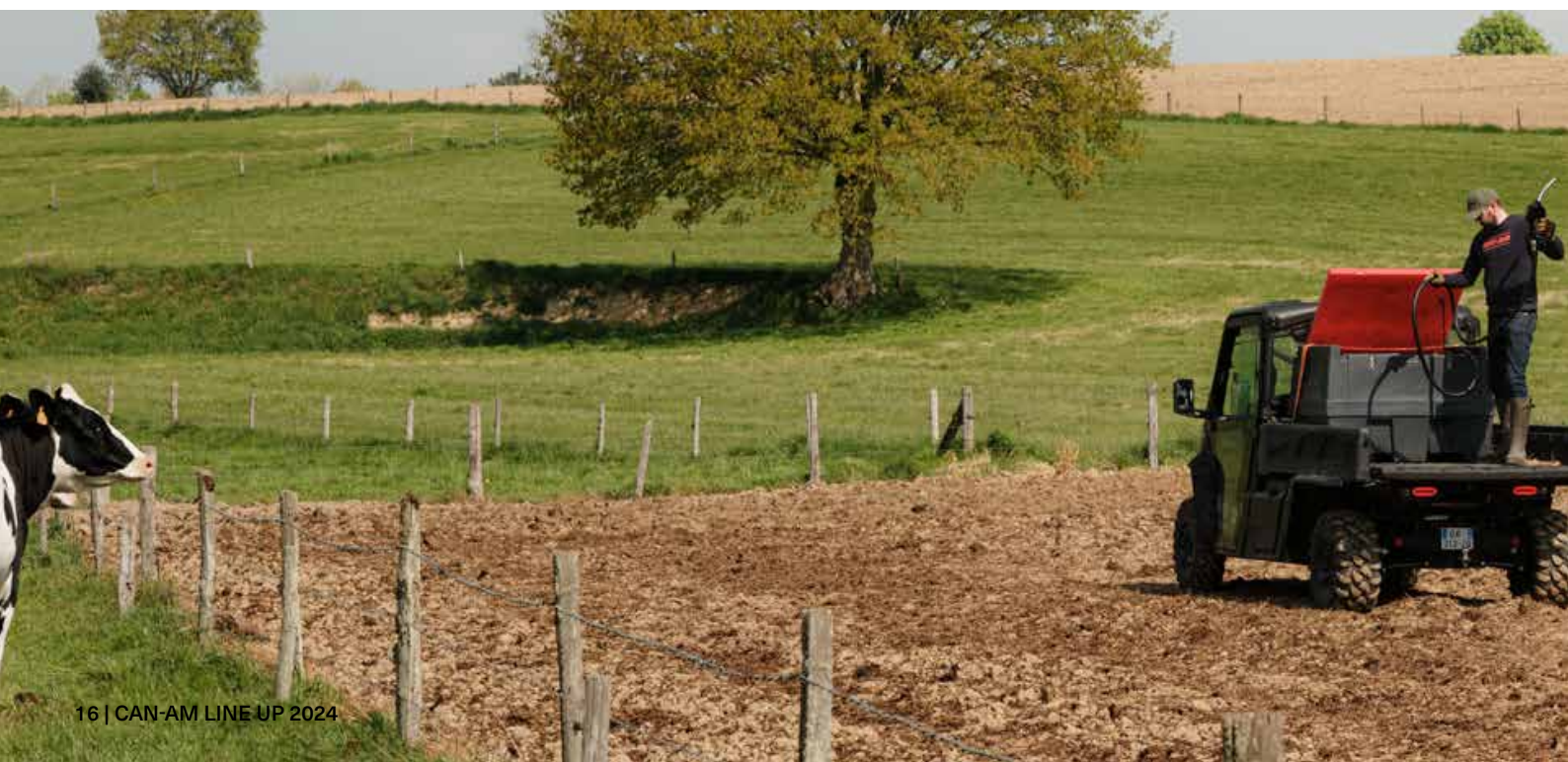
TRAXTER DPS HD9 ●

- 65 hp (48 kW)
- 11 in. (28 cm) ground clearance
- 27-in. XPS Trail Force tires
- VERSA-PRO bench seat
- Dynamic Power Steering (DPS)



TRAXTER XT HD10 ●

- 82 hp (61 kW)
- 13 in. (33 cm) ground clearance
- 27-in. XPS Trail King tires
- VERSA-PRO bench seat with bolster seats, reinforced XT seat skin and adjustable driver seat
- Dynamic Power Steering (DPS)
- 4,500-lb (2,041 kg) winch





TRAXTER PRO DPS HD10 ●

- 82 hp (61 kW)
- 13 in. (33 cm) ground clearance
- 27-in. XPS Trail King tires
- VERSA-PRO bench seat
- Lower Storage 316.5 L, Integrated front steel bumper



TRAXTER MAX DPS HD9 ●

- 65 hp (48 kW)
- 11 in. (28 cm) ground clearance
- 27-in. XPS Trail Force tires
- VERSA-PRO bench seat
- Dynamic Power Steering (DPS)



TRAXTER 6X6 DPS HD10 ●

- 82 hp (61 kW)
- 13 in. (33 cm) ground clearance
- 27-in. XPS Trail King tires
- VERSA-PRO bench seat
- Dynamic Power Steering (DPS)



TRAXTER X MR HD10 ●

- 82 hp (61 kW)
- 15 in. (38.1 cm) ground clearance
- 30-in. XPS Swamp Force tires
- VERSA-PRO bench seat with bolster seats, reinforced seat skin featuring X package trims and adjustable driver seat
- Exclusive Smart-Lok™ technology
- 4,500-lb (2,041 kg) winch





Unparalleled off-roading performance has arrived. Blast through any terrain and never compromise on power, comfort, connectivity or style. Get outside, get dirty and get riding with the most powerful Can-Am SSV.

MAVERICK R - THE MOST POWERFUL



SMOOTH OPERATOR

Powerful HP meets great suspension

Off-roading has never been so smooth - or so fun. Make your ride the best of the best with the Maverick R's first-rate acceleration, shocks and layout. Then get outside and play.



NEW MY24



MAVERICK R X RS 999T DCT ●

- 240 hp (179 kW) Turbocharged Triple-cylinder engine
- Rotax DCT, 7 Speed with High & Low range
- FOX HPG piggyback 2.5 (front) & 3.0 with bypass up to 25.5 in. (64.8cm) rear suspension travel
- 32 in. XPS Track Force tires
- 4.5 in digital display with keypad & 10.25 in. touchscreen display

NEW MY24



MAVERICK R X RS 999T DCT SAS ●

- 240 hp (179 kW) Turbocharged Triple-cylinder engine
- Rotax DCT, 7 Speed with High & Low range
- FOX 2.5 (front) & 3.0 (rear) PODIUM Piggyback with bypass and Smart-Shox Technology featuring Live Valve Gen 3 up to 26 in. (66cm) suspension travel
- 32 in. XPS Track Force tires
- 4.5 in digital display with keypad & 10.25 in. touchscreen display

UL SSV EVER

TURN HEADS EVEN FASTER

Who knew true grit could be so stylish? Nimble yet spacious. Sleek yet tough as nails. The Maverick R was designed to be the best-looking and the best-performing off-roading vehicle ever. And it delivers.



TECH THAT GETS THE JOB DONE

Top-notch navigation and connectivity
The high-performance display, navigation app and infotainment system deliver an experience like no other - all at the touch of a button or the sound of your voice. Stay connected and go further.



MAVERICK DS TURBO RR ●

- 200 hp (149 kW)
- 64 in. width
- 20 in. (50.8 cm) of suspension travel
- 30 in. Maxxis Carnivore† tires, 14 in. cast-aluminum wheels



MAVERICK X RS TURBO RR ●

- 200 hp (149 kW)
- 72 in. width
- Up to 24 in. (61 cm) suspension travel
- Smart-Lok featuring 4WD TRAIL ACTIV mode
- 32 in. Maxxis Carnivore† tires, 14 in. cast-aluminum beadlock wheels



MAVERICK X RS TURBO RR SAS ●

- 200 hp (149 kW)
- 72 in. width
- Up to 24 in. (61 cm) suspension travel
- Smart-Shox Technology, Smart-Lok featuring 4WD TRAIL ACTIV mode
- 32 in. Maxxis Carnivore† tires, 14 in. cast-aluminum beadlock wheels



MAVERICK X RC TURBO RR ●

- 200 hp (149 kW)
- 72 in. width
- Up to 24 in. (61 cm) suspension travel
- Smart-Lok featuring 4WD ROCK mode
- 32 in. Maxxis† Liberty 2.0 tires, 15 in. cast-aluminum beadlock wheels

MAVERICK FAMILY

FOR THE BORN TRAILBLAZER



MAVERICK MAX X RS TURBO RR SAS ●

- 200 hp (149 kW)
- 72 in. width
- 22 in. (55.9 cm) of suspension travel
- Smart-Shox Technology, Smart-Lok featuring 4WD TRAIL ACTIV mode
- 32 in. Maxxis Carnivore† tires, 14 in. cast-aluminum beadlock wheels



MAVERICK TRAIL 700 T ●

EC homologated T category
Up to 60 km/h

- 52 hp (39 kW)
- Up to 10.5 in. (26.7 cm) suspension travel
- 12-in. (30.5 cm) steel wheels
- Integrated front steel bumper
- Full skid plate



MAVERICK TRAIL DPS 700/1000 T ●

EC homologated T category
More than 60 km/h

700: 52 hp (39 kW)
1000: 75 hp (56 kW)

- Up to 10.5 in. (26.7 cm) suspension travel
- 12-in. (30.5 cm) cast-aluminum wheels
- Dynamic Power Steering (DPS)
- Dynamic Brake and Traction Control System



MAVERICK SPORT DPS 1000R T ●

EC homologated T category
More than 60 km/h

- 95 hp (71 kW)
- Up to 12 in. (30.5 cm) suspension travel
- 28-in. Maxxis† Liberty tires
- SHOWA 2.0 shocks
- Dynamic Brake and Traction Control System



MAVERICK SPORT MAX DPS 1000R T ●

EC homologated T category
More than 60 km/h

- 95 hp (71 kW)
- Up to 12 in. (30.5 cm) suspension travel
- 28-in. Maxxis† Liberty tires
- SHOWA 2.0 shocks
- Dynamic Brake and Traction Control System

CAN-AM ACCESSORIES

Can-Am Off-Road accessories are the perfect addition to elevate your vehicle to the next level. Experience High-quality, innovative accessories that work right, fit right and feel right because they're built by Can-Am for Can-Am.



NEW WAYS TO RIDE YOUR WAY

Put every far-flung destination within reach when you accessorize the 2023 Can-Am Outlander 500/700 and PRO with existing and new add-ons. Between LinQ must-haves, cargo essentials and picks for greater comfort, you can personalize this ATV to fit your riding style and needs.

Check out our all accessories at [CANAMOFFROAD.COM](https://canamoffroad.com)

THE ACCESSORIES

(Fits on Outlander PRO & Outlander 500/700)

① LINQ TRUNK BOX (139 L)

Seal the deal on the perfect adventure with the LinQ Trunk Box (139 L).

② ADVENTURE HIGH WINDSHIELD — HARDCOATED

What if you could have one accessory that delivers optical clarity and protection in droves?

③ ADVENTURE SIDE WIND DEFLECTORS

Our Adventure Side Wind Deflectors keep you protected from the wind and weather elements.

④ CONSOLE EXTENSION

Use the Console Extension ecosystem to mount a windshield and side wind deflectors or install a smartphone device securely.

⑤ LINQ STACKABLE FUEL CADDY (14 L)

Keep riding longer and fuel more fun adventures with the LinQ Stackable Fuel Caddy (14 L).

⑥ LINQ TOOL KIT

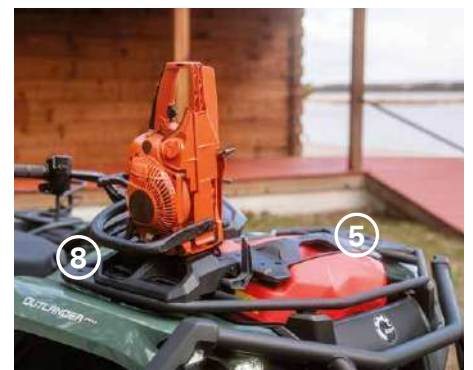
This LinQ Tool Kit is the starter kit with essentials that make your ride truly yours.

⑦ 3.5" (9 CM) LED DRIVING LIGHTS (2 X 14 W)

Ride with confidence when you light the way with the 3.5" (9 cm) LED Driving Lights (2 x 14 W).

⑧ LINQ CHAINSAW HOLDER

Save space on your rack and install a chainsaw securely to pack everything you need for your jobs.



WHISTLE WHILE YOU WORK

Choose from a range of accessories that make hard work easier. Attach a plow to clear your own driveway. Or a winch to pull yourself out of a sticky situation. Instantly adapt for any task ahead.

THE ACCESSORIES

(Fits on Traxter)

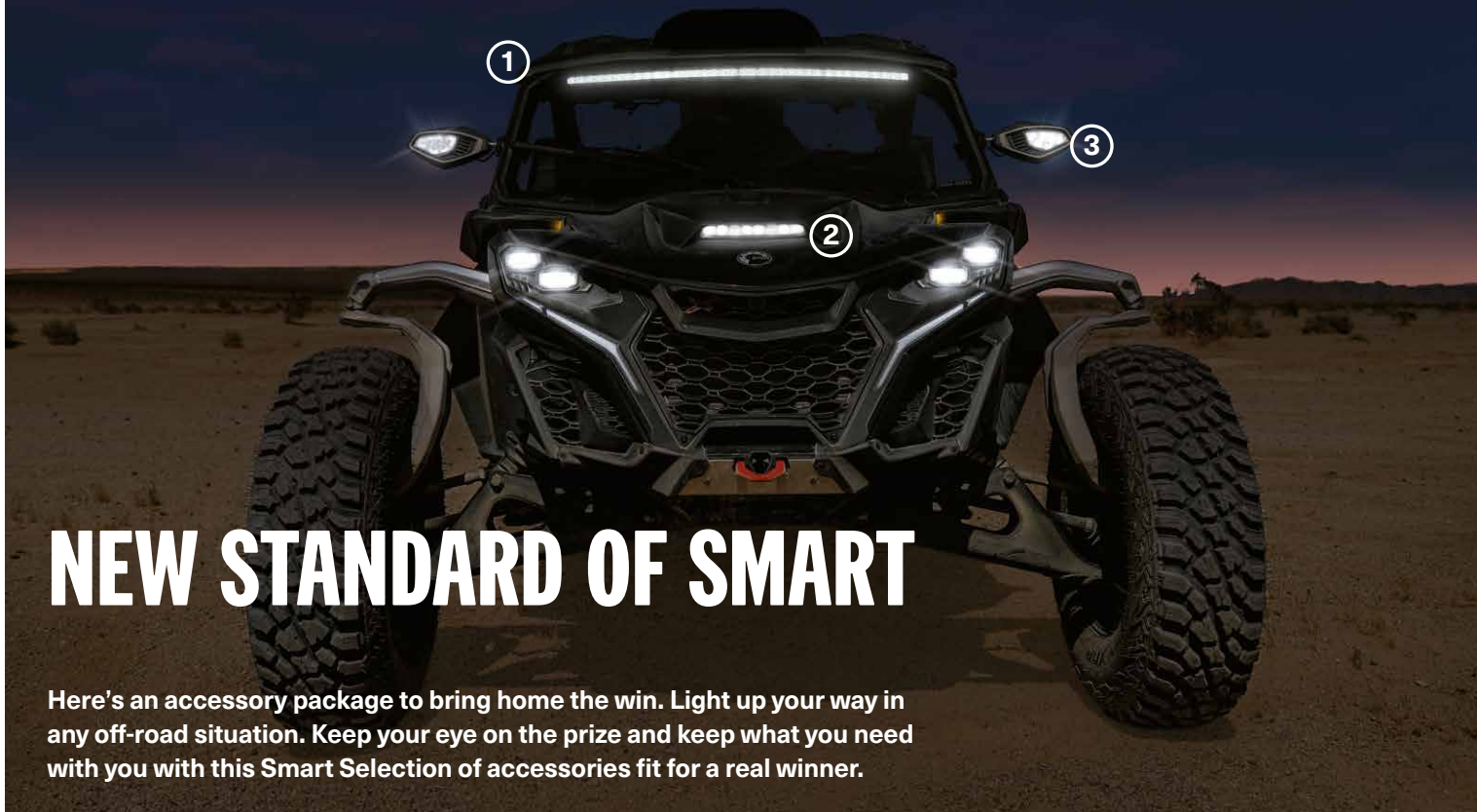
- ① **CLEAR RIGID CAB**
Original Can-Am cabins provide driver and passenger with the best protection from the elements and the cold.
- ② **BED WALL EXTENDER**
Increases your cargo bed capacity with the modular Bed Wall Extender.
- ③ **FRONT BUMPER**
Maximize your vehicle protection with a heavy-duty 1.5" (3.8 cm) front bumper.
- ④ **CAN-AM HD 4500 WINCH**
Unstuck yourself in a flash with a Can-Am HD 4500 winch.
- ⑤ **CAN-AM PROMOUNT FLEX2 72" (183 CM) BLADE PLOW KIT**
Versatile and durable tool for year-round usage.
- ⑥ **DOUBLE STACKED LED LIGHT BAR (90 W)**
Ride with confidence when you light the way with the 15" (38 cm) LED light bar (90W).

Installation of some accessories shown may impact vehicle compliance with some regulations. Consult your local dealer for information.



Explore our all accessories at [CANAMOFFROAD.COM](https://www.canamoffroad.com)





NEW STANDARD OF SMART

Here's an accessory package to bring home the win. Light up your way in any off-road situation. Keep your eye on the prize and keep what you need with you with this Smart Selection of accessories fit for a real winner.



THE ACCESSORIES

(Fits on Maverick R)

- ① SMART INTEGRATED LED ROOF LIGHT**
Mount this light under the roof for a signature look. Plus, it's compatible with windshields!
- ② SMART INTEGRATED LED HOOD LIGHT**
What if you could have one accessory that delivers optical clarity and protection in droves?
- ③ SMART INTEGRATED LED SIDE MIRROR LIGHTS**
Light up corners and see what hides around every aggressive turn. Increase the width of the beams and illuminate the wheels for increased visibility.
- ④ LINQ TRUNK BOX (96 L)**
Weatherproof trunk box made of impact-resistant injected polypropylene reinforced with glass fiber. For a maximum storage capacity of 96 L.
- ⑤ LINQ SIDE CARGO BOXES (13.5 L)**
Weatherproof boxes made of impact-resistant injected polypropylene reinforced with glass fiber.
- ⑥ ALUMINUM SIDE MIRRORS**
Side mirrors to give you all-around visibility on your adventures.

Check out our all accessories at
[CANAMOFFROAD.COM](https://canamoffroad.com)



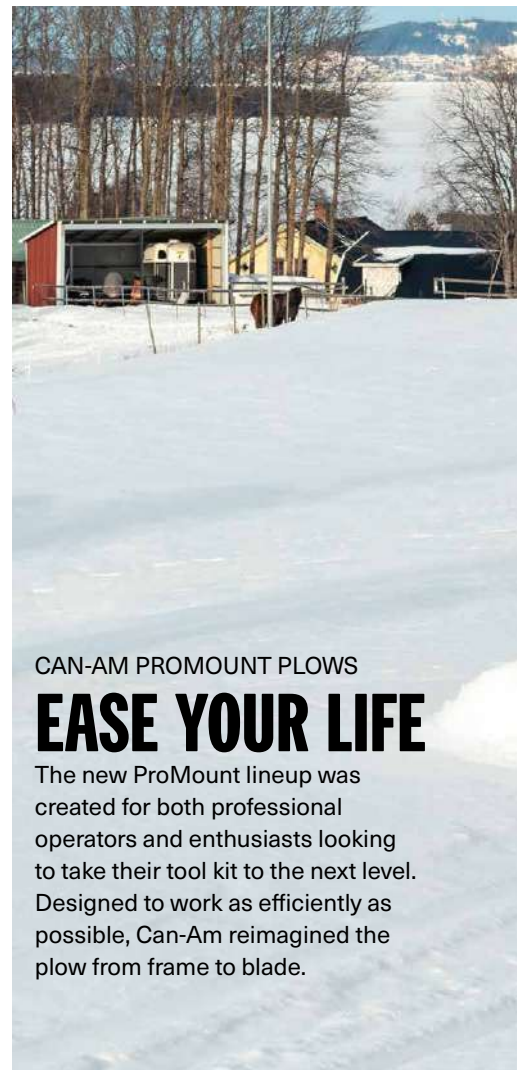
GET BUSY ON SNOWY DAYS

Do more with your ride when the snow starts to fly. Get the most out of your Can-Am this winter with our year-round accessories. Thrive in the snow this winter and don't let anything stop you.

CAN-AM CAB ENCLOSURE

COMFORT AND SAFETY

Original Can-Am cabins provide driver and passenger with the best protection from the elements and the cold, and features the most complete top-of-the-line accessories our product lineup has to offer.



CAN-AM PROMOUNT PLOWS

EASE YOUR LIFE

The new ProMount lineup was created for both professional operators and enthusiasts looking to take their tool kit to the next level. Designed to work as efficiently as possible, Can-Am reimaged the plow from frame to blade.



Explore all accessories at CANAMOFFROAD.COM



VERSATILE TRACK SYSTEMS

GO YOUR OWN WAY

Rise above terrain, weather, and whole seasons with the Apache 360 LT and 360 track kits — the upgrade that takes the Can-Am experience to another level. Designed for superior traction and carrying heavier loads in soft terrain, both 360 and 360LT track kits can be installed on ATV and SSV vehicles and used year round for exploring and completing tough tasks.

Installation of some accessories shown may impact vehicle compliance with some regulations. Consult your local dealer for information.



EXCLUSIVE CAN-AM FEATURES

DPS

Dynamic Power Steering (DPS) improves steering feel in slow-speed working situations and in more technical terrain. It's also designed to offer less assistance at high speeds and more assistance at low speeds.

LINQ

The exclusive LinQ quick-attach system that enables you to add and remove Can-Am accessories in just seconds, including trunk boxes, modular bags, rack extensions and more.

VISCO-LOK

Our exclusive progressive autolocking front differential constantly monitors front-wheel speed. If it detects one wheel spinning faster than the other, it sends more power to the wheel with better traction. The rider doesn't have to do anything to activate it. And the Visco-Lok auto-locking front differential comes without a speed limiter.

ERGONOMICS

We don't just put a seat onto an excellently performing machine, we design the entire vehicle around you. The seat position and cushion are designed to maximize comfort and offer an optimal position for the rider so you can keep going on the trail!

TECHNOLOGY

ATV



ROTAX ENGINE

We start building every Can-Am ATV with a Rotax engine featuring best-in-class power and industry-leading power-to-weight ratio. The whole ATV is designed to work with this power, to give you a true performance edge. That's true for all of our signature engines.

ABS - FULL CONTROL

Can-Am proudly provides the world's first ATVs equipped with ABS (anti-lock braking system), developed specifically for off-road riders. And because braking isn't just about slowing down or stopping, you also get better cornering control for a more responsive ride.

VISCO-4LOK

All grip, no slip. Full mechanical locking function now available on our high-end models. When the conditions call for a locked front differential, riders can manually LOCK the front differential.

LED LIGHTS

2023 Outlander and Renegade 650-1000 models (including Outlander 570 XU+) comes with the new 4 high-performance LED modules which provide an unmatched vision in dark conditions. See farther, wider and brighter.

SSV



ROTAX ENGINE

Rotax engines have become some of the most sought after engines, admired for their precision, performance and reliability.

SUSPENSIONS

Maximize bump absorption with the TTI and TTA. The Torsional Trailing A-Arms (TTA) designed specifically for utility and recreational usage will provide a smooth ride whatever the terrain, while the Torsional Trailing Arm Independent suspension (TTI) ensures the vehicle moves only in the direction you point it, resulting in better traction and optimal transfer of power to the ground.

BTCS - BEST-IN-CLASS HANDLING

Unique, industry only Brake and Traction Control System enables the great handling and stability even in the most challenging riding conditions. Available on selected Maverick Trail, Maverick Sport and Traxter models.



EU-HOMOLOGATION

E10

All T models are homologated under the EU tractor category (167/2013/EC). The models outside the T category are not homologated for public road usage.



THE QUALITY THAT DESERVES AN INVESTMENT

Competitors may try to copy our products but there are a few things they'll never match: the innovative design, the off-road capabilities and the fit-and-finish of our vehicles. With four centres dedicated to advancing technology, Can-Am is constantly innovating to deliver the best riding experience with groundbreaking technology.

MAKING A DIFFERENCE BY BEING SMART

Accessories will not only make your vehicle look better, they will also enhance every ride, every task in front of you. And the unique liq attachment system makes it easier and smarter. Smart and easy to use. Unique liq accessories are attached to your can-am without any hassle, so you can focus on the task at hand.



BORN IN CANADA. DRIVEN WORLDWIDE

Can-Am vehicles have been developed and tested in the roughest Canadian conditions, made to withstand any landscape. They've battled against cold and warm climates in our intense test centres so whether it's snow, ice, mud sand or dirt, our machines can face it all.



BRP REIMAGINES THE WAY YOU ACCESS YOUR WORLD

Can-Am is one of many success stories from BRP, the global company behind some of the most daringly innovative products and experiences that move you. Because it's not about the destination, it's about the journey — yours.

Discover our brands:

ski-doo ***LYNX*** ***SEA-DOO*** ***can-am*** ***ROTAX*** ***ALUMACraft*** ***MANITOU*** ***QUINTREX***

www.brp.com



VISIT YOUR CAN-AM OFFROAD DEALERSHIP FOR DETAILS

CANAMOFFROAD.COM

📷 CANAMOFFROAD

📘 CANAMOFFROAD

#CANAMOFFROADLIFE

